



European Food Sustainable Consumption and Production Round Table

**TGDF Food Congress:
“Global Future, Global Cooperation”
Izmir, 21-23 November 2011**



Structure of the presentation



- 1. Round Table Characteristics**
- 2. Membership**
- 3. Whole chain approach / constituencies**
- 4. Key Objectives**
- 5. Governance Structure**
- 6. Mandates of the Working Groups**
- 7. Achievements so far**



Key characteristics

- Official launch:** 6 May 2009 in Brussels
- Vision:** Promote science-based, coherent approach to SCP in the food sector, consider interactions across the entire food chain
- Working areas:** Methodology, communication, continuous improvement
- Scope:** Food and drink products across the whole life-cycle
- Food actors:** 23 European food chain organisations
- Other members:** Sustainability Consortium, World Resources Institute
- Co-chairs:** European Commission (DGs ENV, SANCO, JRC, ENTR)
- Support:** UNEP, European Environment Agency
- Observers:** National governments, Eurogroup for Animals, UN FAO, UNDP, Spanish Consumers Union (OCU)
- Participation:** EU level organisations subject to expertise and commitment



9 Founding Organisations

1. European Community of Consumer Cooperatives (EUROCOOP)
2. European Farmers and European Agri-Cooperatives (COPA-COGECA)
3. European Feed Manufacturers' Federation (FEFAC)
4. Europe International Federation for Animal Health – Europe (IFAH)
5. European Liaison Committee for Agricultural and Agri-Food Trade (CELCAA)
6. European Organization for Packaging and the Environment (EUROPEN)
7. FERTILIZERS EUROPE
8. FoodDrinkEurope
9. Packaging Recovery Organisation Europe (PRO EUROPE)





14 Other Member Organisations

10. Alliance for Beverage Carton and the Environment (ACE)
11. Association of Poultry Processors and Poultry Trade in the EU (a.v.e.c.)
12. European Aluminium Association (EAA)
13. European Association for Bio-Industries (EuropaBio)
14. European Container Glass Association (FEVE)
15. European Crop Protection Association (ECPA)
16. European Federation of Contract Catering Organisations (FERCO)
17. European Metal Packaging (Empac)
18. European Moderns Restaurants Association (EMRA)
19. European Plastic Converters (EuPC)
20. European Producers of Steel for Packaging (APEAL)
21. EU Feed Additives and Premixtures Association (FEFANA)
22. Flexible Packaging Europe (FPE)
23. Primary Food Processors (PFP)
24. World Resources Institute (WRI)





Co-Chairing Organisation: European Commission



2 Supporting Organisations

1. European Environment Agency (EEA)
2. United Nation Environment Programme (UNEP)



1 Associate Member Organisation

1. The Sustainability Consortium



17 Observer Organisations (1)

1. Agriculture and Agri-Food Canada
2. Eurogroup for Animals
3. French Environment & Energy Management Agency (ADEME)
4. Hungarian Ministry of Rural Development
5. MEEDM - French Ministry for Ecology
6. Netherlands Ministry for Environment
7. Netherlands Agriculture Ministry
8. Spanish Agriculture Ministry



17 Observer Organisations (2)



9. Spanish Consumers Union (OCU)
10. Swedish National Food Administration
11. Technical University of Denmark
12. UK Department for Environment, Food and Rural Affairs
13. UK Food Safety Authority
14. Swiss Federal Office for the Environment
15. United Nations Development Programme
16. United Nations Food and Agriculture Organization



Whole Chain Approach Eligible constituencies

1. Suppliers to the agricultural sector
2. Farmers and agri-cooperatives
3. Agricultural trade
4. Food and drink industries
5. Packaging value chain
6. Transport & logistics operators
7. Retailers
8. End-of-life
9. Consumer NGOs
10. Environmental NGOs





Involvement of other experts



Other relevant experts, who do not represent formal member organisation of the RT (e.g. national authorities, science, academia, actors outside the EU), are invited to participate in the process whenever their expertise can contribute to a concrete item under consideration.



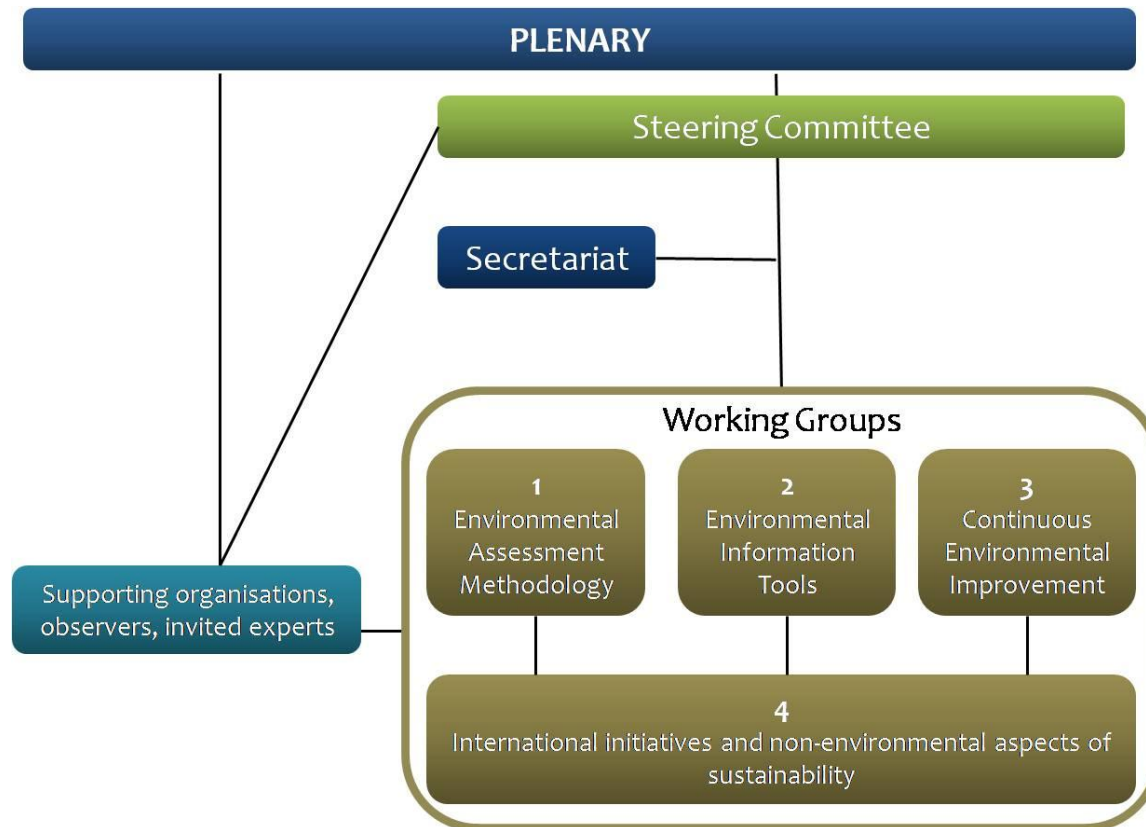
Three Key Objectives:



1. Establish scientifically reliable and uniform **environmental assessment methodologies** for food and drinks
2. Identify suitable **tools and guidance for voluntary environmental communication** to consumers and other stakeholders
3. Promote **continuous environmental improvement** measures along the entire food supply chain;



Governance Structure



All RT bodies are co-chaired by the European Commission and representatives of the RT constituencies



Co-chairing of the RT bodies (1)



Plenary

Soledad BLANCO (DG ENV, Director Industry, European Commission)

Pekka PESONEN (Copa-Cogeca, Secretary General)

Steering Committee

Herbert AICHINGER (DG ENV, Adviser to Soledad Blanco, European Commission)

Pascal GREVERATH (FoodDrinkEurope), Director Environmental Sustainability,
Nestlé)



Co-chairing of the RT bodies (2)



WG1: Environment assessment

David PENNINGTON (DG Joint Research Centre, European Commission)

Jean-Christophe BLIGNY (FoodDrinkEurope, Director Environment, Danone Waters)

WG2: Environmental information

Jeroen VAN LAER (DG SANCO, European Commission)

Tania RUNGE (Copa-Cogeca, General Affairs Advisor)

WG3: Continuous improvement

Harald SCHÖNBERGER (DG Joint Research Centre, European Commission)

Christian PALLIERE (Fertilizers Europe, Director Agriculture and Environment)

WG4: International and non-environmental aspects

Giulia DEL BRENNA (DG Enterprise and Industry, Acting Head of Unit F.4 – Food Industry)

Jean-Luc MERIAUX (CELCAA, UECEV Secretary General)



The mandates in a nutshell



WG1: Environment assessment

- “Guiding Principles” on the environmental assessment of food and drinks (mid 2010)
- Establishment of consistent methodologies to implement the principles (end 2011)

WG2 : Environmental information

- “Guiding Principles” on environmental information to consumers + others (mid 2010)
- Evaluation of existing and emerging tools + recommendations on their use (end 2011)

WG3: Continuous improvement

- Map existing and emerging industry and multi-stakeholder initiatives to address them (2010)
- Identify the key environmental challenges along the various F&D chains (mid 2012)
- Identify priority areas for continuous improvement, R&D and eco-innovation (mid 2012)

WG4 : International and non-environmental aspects:

- What initiatives within the scope of WGs 1 – 3 exist or emerge at the international level?
- What implications on non-environmental aspects (costs/benefits, SMEs, IM + trade, food prices,..)
- Recommendations to WGs 1 – 3 (2010)



The Lead Principle



Environmental information communicated along the food chain, including to consumers, shall be scientifically reliable and consistent, understandable and not misleading, so as to support informed choice.



Ten Guiding Principles

- I. **Principles for the voluntary environmental assessment of food and drink products**
 1. Identify and analyse the environmental aspects at all life-cycle stages.
 2. Assess the significant potential environmental impacts along the life-cycle.
 3. Apply recognised scientific methodologies.
 4. Periodically review and update the environmental assessment.



Ten Guiding Principles

II. Principles for the voluntary communication of environmental information

5. Provide information in an easily understandable and comparable way so as to support informed choice.
6. Ensure clarity regarding the scope and meaning of environmental information.



Ten Guiding Principles

III. Principles for both voluntary environmental assessment and communication

7. Ensure transparency of information and underlying methodologies and assumptions.
8. Ensure that all food chain actors can apply the assessment methodology and communication tools without disproportionate burden.
9. Support innovation.
10. Safeguard the Single Market (Internal Market) and International trade.



Time schedule



- **External consultation** on Guiding Principles conducted - March 2010
- **Guiding Principles** on environmental assessment and voluntary communication of environmental information on F&D products:
 - **Adopted by Plenary 13th July 2010**
- **Harmonised framework assessment methodology** for F&D products:
 - Scientific workshop 5th-6th July 2011 at EU Commission Joint Research Centre; finalisation by end 2011
 - Pilot testing: 2012
- **Recommendations on the use of voluntary communication tools:** Public consultation 15 July - 15 September 2011, **Proposal to Plenary 8 December 2011**
- **Reporting on continuous environmental improvement** along the food chain: Public consultation 3 August – 30 September 2011
 - First Report to Plenary: mid-2012
- **International and non-environmental aspects:**
 - First report to WGs 1 -3: December 2010
 - Facilitation of alignment at international level: 2011/2012



European Food Sustainable Consumption and Production (SCP) Round Table

Eligible organisations interested in becoming a formal member of the RT are invited to contact the RT Secretariat.

For any further information please contact also the RT Secretariat:

info@food-scp.eu